



The advertisement features several close-up photographs of bearings. In the top right, a bearing is shown with 'ART' and '6206' markings. In the bottom left, a bearing is shown with 'ART' and '6208' markings. In the bottom center, another bearing is shown with 'ART' and '6208' markings. A red circular graphic on the left side contains a stylized bearing design.

ART

BEARINGS

OUR PRODUCTION PLANTS

S.C. "RULMENTI" S.A. BARLAD is constructed in 1953 and is a worldwide supplier of bearings and services in the rolling bearing business. After privatization by Kombassan in 2000 with the investment and improvement it joined to first class of bearing producers. The Company is among the biggest producers of rolling bearings from South East of Europe and making export more than 80 countries mainly to the Europe and North America.



Anadolu Rulman İmalat San. ve Tic. A.Ş. (ART), is being the member of the Rulmenti Group with more than 60 years experience was constructed in 2005. ART is one of the two bearing producers in Turkey, with continuous improvement, customer oriented approach in domestic and abroad market, reaches the excellence in product and services in bearing business.

New MGM ZRT was constructed to very near the capital city of the Hungary in 1950 and it was joined to Rulmenti Group family in 2007. Our products are widely used from automotive industry through agricultural machinery to home appliances 70% of our bearings are exported mainly to Western Europe, where our products are sold to world class OEMs. Our traditions in the field of production and technical-technological development drive us to meet the market challenges through continuous improvement of our products.



URB GROUP INTERNATIONAL REFERENCES

**Gardner
Denver**



POLRAIL SERVICE

JOHN DEERE

Bonfiglioli



**NATIONAL
OIL WELL
VARCO**

BOSCH

moventas GEARED FOR NEW ENERGY

DAIMLER

LUFKIN



TÜLOMSAŞ
Türkiye Lokomotif ve Motor Sanayii A.Ş.



ArcelorMittal



**SEW
EURODRIVE**

PENTAIR

OMV

KONECRANES

Suspensys

**LEROY
SOMER**



ThyssenKrupp

ART DOMESTIC REFERENCES

HASÇELİK

hipomak
HYDRAULIC

BASAK

ÖNALLAR

ÖZDEMİR
REDÜKTÖR

özdöken
Tarım Makinaları Sanayi ve Ticaret A.Ş.

DALGA/KIRAN
KOMPRESÖR

ÇELİKEL
PROFESYONELLERİN TERCİHİ

AEMOT
ELECTRIC
MOTORS

DE
DEMİR
EXPORT

REMAK
Redüktör

İmbat
MADENCİLİK ENERJİ TURİZM SANAYİ VE TİCARET A.Ş.

TÜMOSAN

TCDD

ÇELİKİŞESEN

AKAR
DİNGİL AXLE

boskay metal
SANAYİ VE TİCARET LİMİTED ŞİRKETİ

ARK

EGE
REDÜKTÖR

ZET
Redüktör

DI-SAN
Otomotiv Makina San. ve Tic. Ltd. Şti.

NAGEL
MAKİNA MOTOR
İML. SAN. VE TİC. LTD. ŞTİ.

ÇELİK MAK

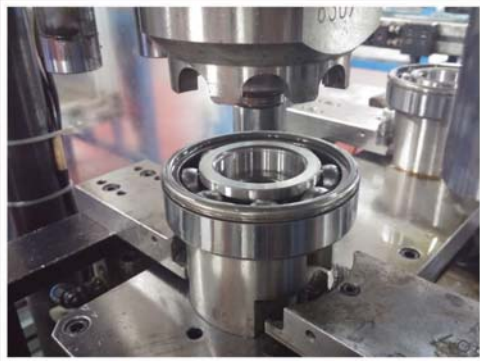
Çelikişesen

tinaz



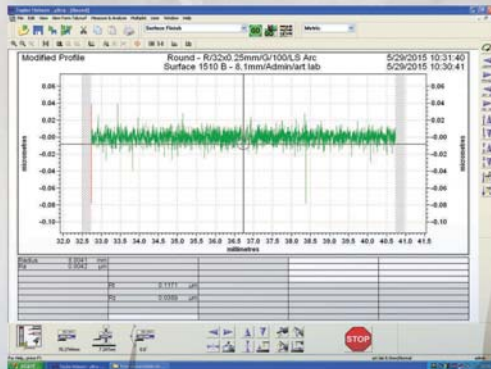
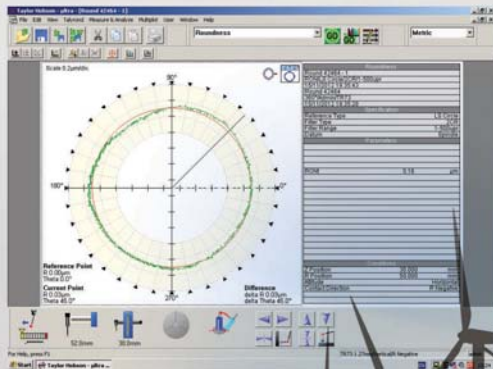
DEEP GROOVE BALL BEARINGS

* By using the latest technology, reliable durable and high quality products



* Bearing for special working conditions (high temperature, high speed, dust, heavy load, high humidity or water vapor, vibration, electrical arc) for the industries such as; Steel Industry, Cement Industry, Electric Motor Industry, Pump Industry, Agricultural Machines, Gear Boxes,

* **Hybrid Bearings** Our bearings with ceramic balls with improved design are suitable to use for higher speed with lower noise level and lower working temperature and increased working life with higher performance.



* ART ball bearings are designed and produced for fully customer satisfaction

* Due to the improved ISO standards, ART bearings can easily meet the necessity of industry.



* R-D centralized analysis, design and production with long experience of engineering result in creative solutions for special applications.

* The meeting point of experience and technology results in reliable low cost solution of bearings

Bearing Series

- 60x Series : 607 – 609
- 61x Series : 618/5– 619/9
- 62x Series : 623– 627
- 63x Series : 634– 635
- 60xx Series : 6000 – 6060M
- 62xx Series : 6200 – 6226
- 63xx Series : 6300 – 6324M
- 64xx Series : 6400 – 6418
- 68xx Series : 6800 – 6830
- 69xx Series : 6900 – 6930
- 160xx Series : 16002 – 16030
- 618xx Series : 61800 – 61818
- 619xx Series : 61900 – 61910
- 622xx Series : 62200 – 62220
- 623xx Series : 62300 – 62319
- 88508, 88509, 697006, 630309, 6207 RSDNBEL, 712213, 712222



TAPERED ROLLER BEARINGS



* High performance and long life with more than 60 years experience result in excellence.

* The improved bearings for low friction moment with R-D projects together studied with technical universities and TUBITAK result in low energy loss bearings.

* Optimized stress distribution between roller and raceway ensures optimum load distribution and this prevents edge failure because of edge stresses.

* The surface quality are increased by improving the grinding and honing processes.

* The life of the bearings are increased around 30% with improved internal geometry.



TAPERED
ROLLER
BEARINGS

ART

TÜRKIYE

32008

Bearing Series

302xx Series : 30202 – 30240
303xx Series : 30302 – 30324
320xx Series : 32005 - 32026
322xx Series : 32202 – 32240
323xx Series : 32303 – 32320
330xx Series : 33005 – 33030
331xx Series : 33115 – 33122
332xx Series : 33205 – 33215
313xx Series : 31305 – 31326
and Inch series...





THRUST BALL BEARINGS

ART thrust ball bearings are improved with new internal construction design and know-how result in increased load higher working speeds.



Bearing Series

- 511xx Series : 51100 – 51192
- 512xx Series : 51200 - 51272
- 513xx Series : 51305 – 51340
- 514xx Series : 51405 – 51430
- 522xx Series : 52202 – 52240
- 523xx Series : 52305 – 52328
- 524xx Series : 52406 – 52430
- 532xx Series : 53200 – 53228
- 533xx Series : 53305 – 53330
- 534xx Series : 53406 – 53426
- 542xx Series : 54202 – 54226
- 543xx Series : 54305 – 54324
- 544xx Series : 54405 – 54420

The internal tension is decreased between rolling elements and raceway, thus fatigue limits are increased between contact points. By this way increased life can be achievable,



THRUST BALL BEARINGS



CYLINDRICAL ROLLER BEARINGS

ART, cylindrical roller bearings with increased contact line between rollers and rings, the bearing life is increased.

Proper loading and lubrication working condition with very low noise and little friction, increased life with higher speed is achieved.

CYLINDRICAL ROLLER BEARINGS



Bearing Series

- N Series : N203 – N240
- NU Series : NU203 - NU19/710M
- NU + HJ Series : NU+HJ 203 – NU+HJ 19/710M
- NJ Series : NJ203 – NJ2992
- NJ+HJ Series : NJ+HJ 203 – NJ+HJ 2992
- NUP Series : NUP203 – NUP244M
- NJ23VH Series : NJ2305 VH – NJ2340 VH
- NC Series : NC2904 – NC2992
- NCF Series : NCF2904 – NCF2918/750
- NN Series : NN3006 – NN3048
- NUU Series : NNU4916 – NNU4984
- NN Series : NN4938 – NN4948
- NNC Series : NNC4912 – NNC49/530
- NNCF Series : NNCF5005 – NNCF49/530
- NNCL Series : NNCL4912 – NNCL49/530





SPHERICAL ROLLER BEARINGS

ART spherical roller bearings are improved by increasing the roller and raceway quality and also by optimization of surface geometry of the roller and raceway. Therefore load carrying capacity and life of the bearings are increased.

With the new production technologies increased surface qualities result in very low noise level, increased life and increased load, easy maintenance is achieved.



SPHERICAL ROLLER BEARINGS

Bearing Series

- 213xx Series : 21307 – 21322
- 222xx Series : 22205 – 22264
- 223xx Series : 22308 – 22352
- 230xx Series : 23020 – 23080
- 231xx Series : 23120 – 23180
- 232xx Series : 23218 – 23268
- 233xx Series : 23328 – 23332
- 240xx Series : 24020 – 24080
- 241xx Series : 24122 – 24196
- 251xx Series : 25118 – 25134
- 252xx Series : 25226 – 25228
- 239/xxx Series : 239/600-239-750

RAILWAY BEARINGS



RAILWAY BEARINGS

* Journal roller bearings, axle bearings, transmission bearings, traction motor bearings for railway applications.

* Our railway bearings have IRIS (International Railway Industry Standard) certification and including Turkish Railway and some important European countries are using our bearings.

* Railway bearings are produced according to UIC 510-1, EN 12080 and EN 12082 standards.

WJ Bearing Series

WJ+WUJ110/215 MC3
WJ+WJP 110/215 MC3
WJ+WJP117/240 MC4
WJ+WJP118/240 MC4
WJ+WJP119/240 MC4
WJ+WJP120/240 MC3
WJ+WJP120/240 TNC3
WJ+WJP130/240 MC3
WJ+WJP130/240 TNC3
WJ+WJP130/250 MC4
WJ130/250 F
WJP130/250 F
WJ+WJP130/250 F
WJ+WJP130/260M6C4
WJ+WJP140/300 MC4
WJ+WJP160/320 MC4

Deep Groove Ball Bearings

60x Series : 607 – 609
61x Series : 618/5– 619/9
62x Series : 623– 627
63x Series : 634– 635
60xx Series : 6000 – 6060M
62xx Series : 6200 – 6226
63xx Series : 6300 – 6324M
64xx Series : 6400 – 6418
68xx Series : 6800 – 6830
69xx Series : 6900 – 6930
160xx Series : 16002 – 16030
618xx Series : 61800 – 61818
619xx Series : 61900 – 61910
622xx Series : 62200 – 62220
623xx Series : 62300 – 62319
88508, 88509, 697006, 630309,
6207 RSDNBEL, 712213, 712222

Spherical Roller Bearings

213xx Series : 21307 – 21322
222xx Series : 22205 – 22264
223xx Series : 22308 – 22352
230xx Series : 23020 – 23080
231xx Series : 23120 – 23180
232xx Series : 23218 – 23268
233xx Series : 23328 – 23332
240xx Series : 24020 – 24080
241xx Series : 24122 – 24196
251xx Series : 25118 – 25134
252xx Series : 25226 – 25228
239/xxx Series : 239/600-239-750

Cylindrical Roller Bearings

N Series : N203 – N240
NU Series : NU203 – NU19/710M
NU + HJ Series : NU+HJ 203 – NU+HJ 19/710M
NJ Series : NJ203 – NJ2992
NJ+HJ Series : NJ+HJ 203 – NJ+HJ 2992
NUP Series : NUP203 – NUP244M
NJ23VH Series : NJ2305 VH – NJ2340 VH
NC Series : NC2904 – NC2992
NCF Series : NCF2904 – NCF2918/750
NN Series : NN3006 – NN3048
NNU Series : NNU4916 – NNU4984
NN Series : NN4938 – NN4948
NNC Series : NNC4912 – NNC49/530
NNCF Series : NNCF5005 – NNCF49/530
NNCL Series : NNCL4912 – NNCL49/530

ENERGY GROUP BEARINGS

ENERGY GROUP BEARINGS

* Our company with more than 60 years experience and know how can supply standart and special bearings for wind turbine industry, for petroleum industry, for gearbox industry, for steel industry.

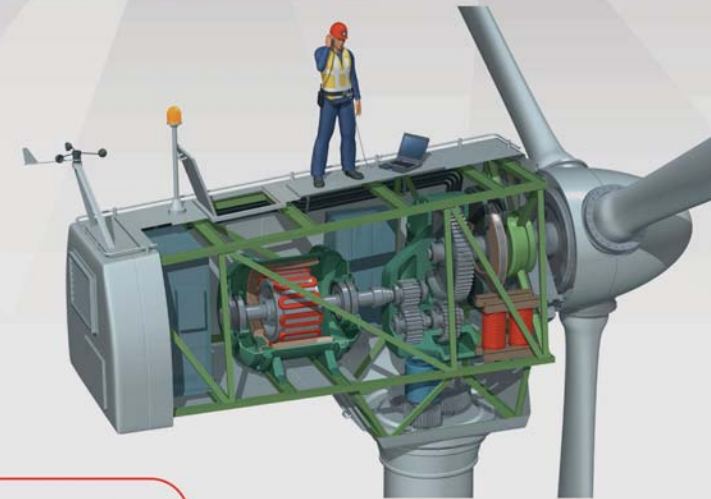
* Our R-D engineers having succesfull results for their empowered innovative design to meet the Germanischer Lloyd standarts.

Cylindrical Roller Bearings For Wind Turbine

NU2218 EMASQ1
NJ2220 EMSQ1
NJ2320 EMSQ1
NU2320 EMSQ1
NJ2222 EMSQ1
NU2222 EMSQ1
NU222 EMSQ1
NJ2322 EMASQ1
NJ322 EMSQ1
NJ2324 MC3SQ1
NJ2224 EMSQ1
NU2224 EMSQ1
NJ324 EMSQ1
NU326 EM6SQ1
NJ2226 EMSQ1
NU2226 EMSQ1
NJ2326 EM6SQ1
NU2326 EM6SQ1
NU226 EMSQ1
NJ228 EMSQ1
NU2228 EM6SQ1
NU2328 EMASQ1
NJ2230 EMSQ1
NJ2330 EMASQ1
NU330 EMASQ1
NU230 EMSQ1
NJ2332 EMSQ1
NJ2232 EMSQ1
NU2232 EMSQ1
NU232 EMSQ1
NU2234 EMASQ1
NJ2334 EMSQ1
NJ234 EMSQ1
NU2336 EMSQ1
NU2338 EM6SQ1
NJ2240 EMSQ1
NU2240 EMSQ1
NU1048 MSQ1
NU1068 MSQ1

Spherical Roller Bearings For Wind Turbine

22217 MBW33
22319 MBW33
22320 MBW33
22322 MBW33
22324 MBW33
22226 MBW33
22326 MBW33
22234 MBW33
23134 MBW33
24134 CAW33
24136 CAW33
23238 MBW33
23240 MBW33
24144 MBW33
23244 MBW33
23948 MBW33
23152 MBW33
23956 MBW33
23960 MBW33
23964 MBW33
23064 MBW33
23972 MBW33



* Improved design with optimized geometry for improved one and more row bearings are suitable for higher radial loads in gearboxes and generators.

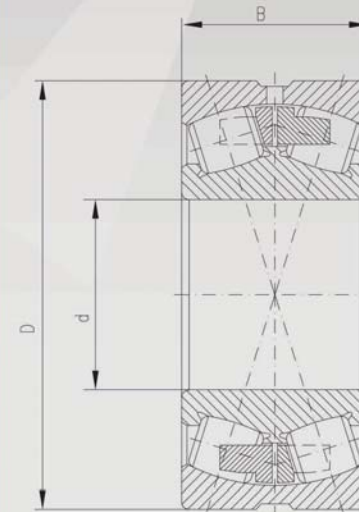


VIBRATING EQUIPMENT BEARINGS

Spherical Roller Bearings

- 22208 MAC4F80W33
- 22308 MAC4F80W33
- 22309 MAC4F80W33
- 22310 MAC4F80W33
- 22211 MAC4F80W33
- 22311 MAC4F80W33
- 22312 MAC4F80W33
- 22213 MAC4F80W33
- 22313 MAC4F80W33
- 22314 MAC4F80W33
- 22315 MAC4F80W33
- 22316 MAC4F80W33
- 22317 MAC4F80W33
- 22318 MAC4F80W33
- 22319 MAC4F80W33
- 22320 MAC4F80W33
- 22322 MAC4F80W33
- 22322 MAC4F80W33
- 22324 MAC4F80W33
- 22226 MAC4F80W33
- 22326 MAC4F80W33
- 22328 MAC4F80W33
- 23328 MAC4F80W33
- 22330 MAC4F80W33
- 22332 MAC4F80W33
- 23332 MAC4F80W33
- 22334 MAC4F80W33
- 22336 MAC4F80W33
- 23238 MAC4F80W33
- 22338 MAC4F80W33
- 22340 MAC4F80W33

* Vibrating equipment bearings are designed for precision working areas, extra load, higher operational speed, contaminated working areas,



* The shaking actions of vibrating equipment subjects the bearings to very heavy loads, including impact loads. Additional load is created by higher "g" forces generated by acceleration in the application.



VIBRATING EQUIPMENT BEARINGS

BEARINGS FOR MINING INDUSTRY

* In the mining sector severe operating and environmental conditions require extremely robust bearings. Bearings for mining industry it is used of bucket wheel excavators, draglines, conveyor belts, trucks, stackers, transport equipment and mine, loaders, longwall shearers, hoists.

* Mining industry use many types of bearings: rolling bearings, deep groove ball bearings, spherical roller bearings and tapered roller bearings.



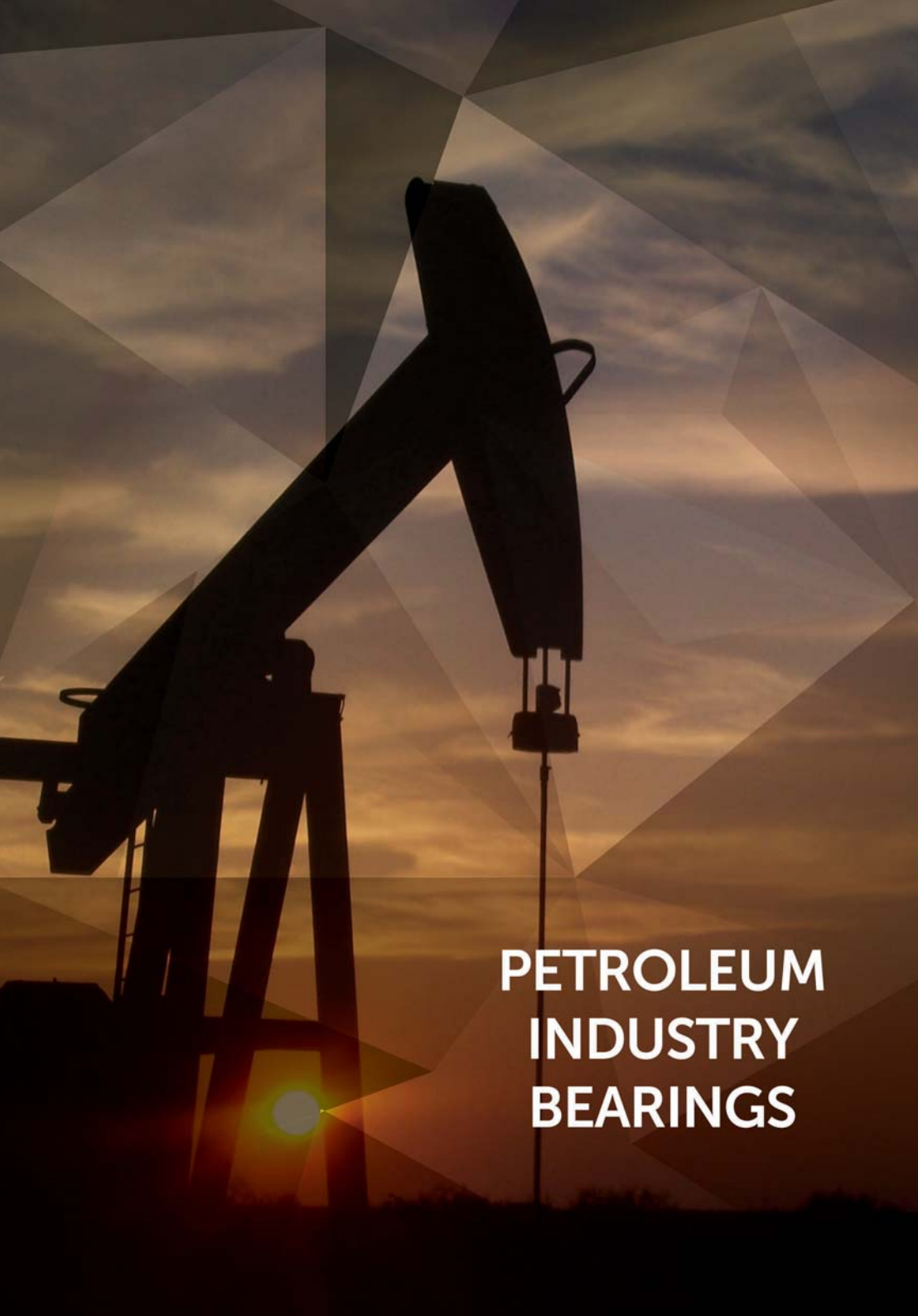
Dimension (mm)			Basic radial load (mm)		Speed Limit	Bearing Code
d	D	B	Dyn.	Static	Grease	
			C _r kN	C _{er} kN		
19	35	10	6	3.3	12000	6003/19
20	47	14	12.8	6.7	15000	692204TN
20	47	15.18	12.8	6.7	10000	204 WR Z22 SFA
20	52	21	16	7.9	8000	62304-2RSR
20	60	31.6	16	7.9	8000	690204C3S3
20	80	15	16	7.9	8000	500504-2RSRTNC3
24.2	47	19.8	10.1	5.9	8000	696205-2RSRTN
25	52	12	14	7.9	8000	420205
25	52	18	14	7.9	8000	62205-2RSR
25	62	24	20.6	11.2	7000	62305-2RSR
25	67	19	20.6	11.2	9000	691305TN
25.4	52	15	14	7.9	12000	6205/25.4UGC3
26	47	19.6	10.1	5.9	8000	696405-2RSRACRTNC3L21
27	47	8	9.1	5.55	15000	6005 S0F2
30	55	13	13.2	8.2	7000	6006A-2RSRTN
30	55	18.9	13.2	8.2	7000	696906-2ZRC3
30	62	16	19.5	11.4	7500	96108006
30	62.1	24.5	13.2	8.2	7000	697106
30	65	21	25	14	6000	630374-2RSTNC4
30	65	21	25	14	6000	697006-2RSTNC4
30	72	19	26.5	15	6000	96108005
30	72	28	28.3	16	7000	10/330 PZ
30	75	19	30.7	19.6	9000	697706MPA
30	75	19	32.9	17.6	9000	698806MBC3
33	66	17	17.8	11.2	9000	65907
35	72	17	25.7	15.6	7000	6207RSDNBTNEL
35	72	25	25.7	15.6	7000	88507
60	110	25	52.4	36.3	4000	6212-2RSR/B25
63.5	100.3	21.8	25.4	22.3	5500	691013
70	148	45	48.4	39.7	3600	690916M
210	290	23.5	54.9	73.7	1800	690342

Dimension (mm)			Basic radial load (mm)		Speed Limit	Weight (Kg)	Bearing Code
d	D	B	Dyn.	Static	Grease		
			C _r kN	C _{er} kN	min ⁻¹		
100	180	46	375	500	2800	5.24	22220C
200	360	98	1140	1716	1200	44.4	22240MB
240	440	120	1818	2701	1000	85.2	22248MB
75	160	55	415	520	3000	5.28	22315C
85	180	41	350	450	2800	5.10	22317C
90	190	64	570	730	2400	8.70	22318C
100	215	73	730	960	2000	13.2	22320C
110	240	80	870	1160	1900	18	22322MB
460	760	300	7250	14600	670	560	24192C



BEARINGS FOR MINING INDUSTRY





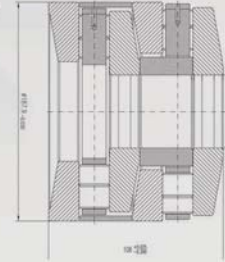
PETROLEUM INDUSTRY BEARINGS

PETROLEUM INDUSTRY BEARINGS

* High load carrying capacity in an extremely confined space, high reliability, high corrosion resistance,

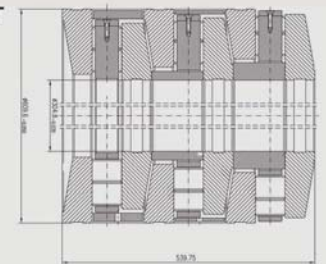
* Our company offers specifically designed bearings for high thrust loads

**TANDEM THRUST
2 STAGE**
TAB-035075M



* The tandem design allows the use of high thrust capacity bearing in a small area.

**TANDEM THRUST
3 STAGE**
TAC-120240-207M

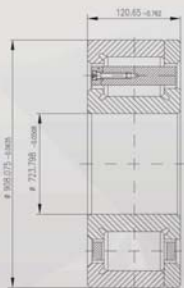


* The material used is 100 Cr6MnSi has good hardenability and good temperature resistance and stability

Dimensions (mm)			Row	Basic Radial Load (kN)		Weight (kg)	ART Bearing Code
d	D	H		Ca	Coa		
88.9	187.9	108	2	3106	821	2.5574	TAB-035075M
304.8	609.6	539.75	3	13500		810.082	TAC-120240-207M

Big Size Cylindrical Roller Bearings (NPEW/724M)

Dimensions (mm)			Row	Basic Radial Load (kN)		Weight (kg)	ART Bearing Code
d	D	H		Ca	Coa		
723.798	908.075	120.65	1	2985	7366	195.8	NPEW/724M



Cylindrical Roller Bearings

NU2252 EM
NU2264 M
NU1076 M
NUP1080 M
NUP29/560 M
NUP29/600 EMA
NUP29/630 EMA
NUP29/710 EMA

Spherical Roller Bearings

22356 CAW33
23156CA/C3W33
23160CAW33
23176 CAW33
23260 MBW33
24060CAW33
24176 CAW33
230/600 CAW33

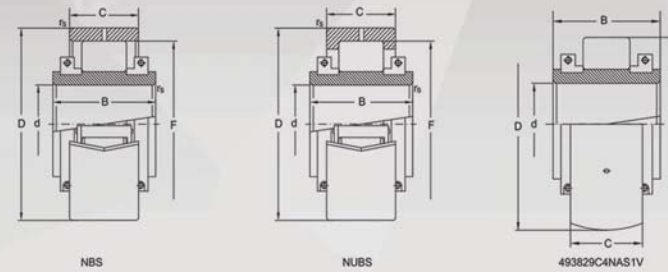
Angular Contact Thrust Ball Bearings

RY 65/500
RY 65/530
RY 65/600
RY 65/600 A
RY 65/800 B

BEARINGS FOR METALLURGICAL INDUSTRY

* Bearings for the mining industry must meet special requirements t High operational reliability t Reduced maintenance requirements t High load carrying capacity t Simple mounting and dismounting

* In the mining sector severe operating and environmental conditions require extremely robust bearings.



NUBS5125 MA
NBS5126 M
493829 C4NAS1V
NUBS5144 MA
NBS5160 MC3NA

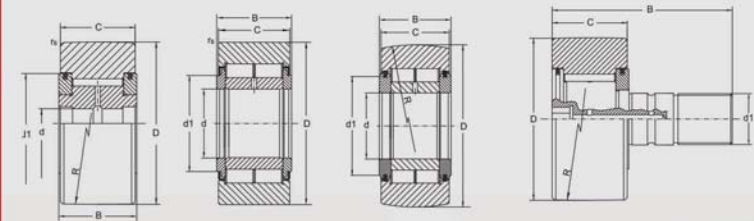


* Bearings for mining industry are used of bucket wheel excavators, draglines, conveyor belts, trucks, stackers, transport equipment and mine, loaders, longwall shearers, hoists

* Mining industry uses many types of bearings: rolling bearings, deep groove ball bearings, spherical roller bearings and tapered roller bearings.

Cylindrical Roller Bearings

NNUP5104 V
NUTR20
NNUP5105 V
NUTR25F
NNUP5205 V
NUTR2562
NNUP5206 V
NUTR30
NNUP5106 V
NNUP5107 V
NUTR35
NNUP5108 V
NUTR40
NNUP5208 V
NUTR4090-2Z
NNUP5109 V
NUTR45100-2Z
NUTR80x160x72
NUTR140-2RS
NNUP5228 VC3
NUTR150-2RS
NNUP5130 VC3W44



BEARINGS FOR METALLURGICAL INDUSTRY

BEARINGS FOR METALLURGICAL INDUSTRY

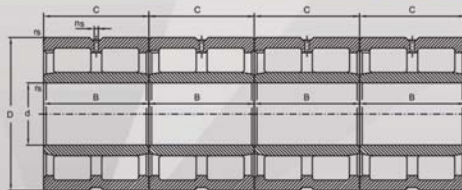
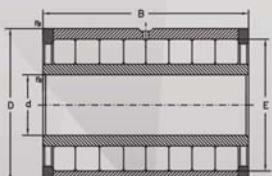
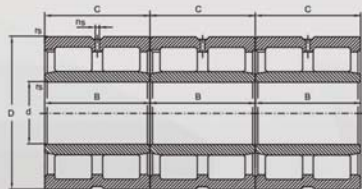
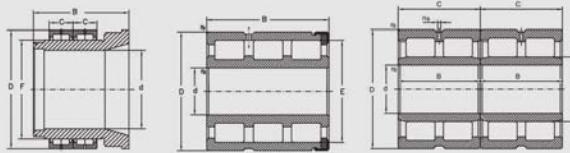
Cylindrical Roller Bearings (Multi Row Rolling Bearings)

CR0113.13 V
 NNU6016 VC3
 4NNU5118 VW33
 491420 M
 3NN5226 VP5
 3NN5126 P6NAS1W26
 3NNU5128 V
 4NNU5129 PMC4W8
 4NNU5232 PMC3
 4NNU5232 PMW8
 4NNU5232 PMC4W8F182
 3NN5234 C3
 4NNU5136 PMW8
 3NN5138 VC3W33
 4NNU5138 PMW8
 3NN5140 VC3W33
 3NNC5140 VW33
 4NNU5240 VC3W8
 4NNU5240 VC3W8
 4NNU5140 PMC3W8
 3NN5144 VC3W33
 4NNU5146 PMC4
 4NNU5152 PMC4
 3NN5156 VC3W33
 4NNU5156 PMC3W8
 2xNNU4960 MC3W33
 3xNNU4960 MC3W33
 2xNNU4964 MC3W33
 4xNNU4984 MC3W33



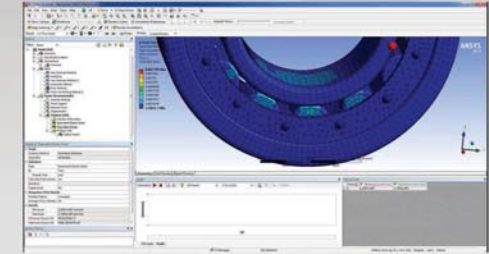
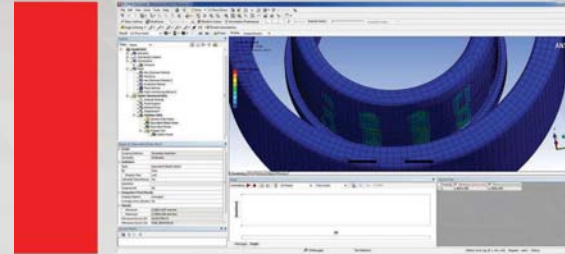
Bearing Code	d	D	B	Application
22220 MBKW33	100	180	4	Travelling Crane
22236 CC5S3W33	180	320	8	Rolling Mill
22318 MBC5S3W33	90	190	6	Furnace Crane Rail
22315 CW33	75	160	5	Gearbox
T 21148 MBC5W33	240	400	16	Rolling Mill

S=3 Special Heat Treatment for operating temperature up to 300 °C

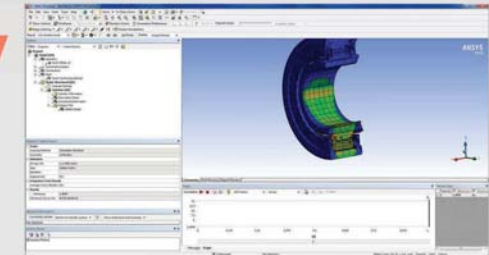


BEARING DESIGN AND ANALYSIS

* The simulations which are made to show how the product workstand behaves in real working environment so it is possible to see the real characteristics of the product during design phase. Simulation-based products development analysis are made with mode analysis, harmonic analysis, short-term addition to the many dynamic work as dynamic analysis and spectrum analysis, tested in conditions of stress and deformation of the above products also includes analyzes conducted to estimate the product's thermal behavior and product life.



* In our group companies finite element analysis (FEA) for design verification of products are used. The products have been designed with solid modeling, therefore mechanical design and finite element analysis tools provide compatibility with each other.

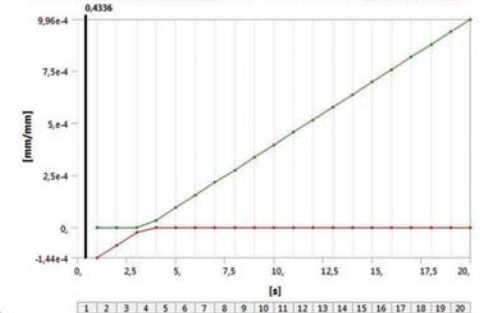


* Material behavior which cannot be calculated or seen can be easily calculated with finite element analysis in very short time, therefore FEA is accelerating the innovative work of our R-D department.



* Simulation based product developments studies with universities to open new horizons for studies on product development is gaining momentum with each passing day. Objective of the innovative is the creation of reliable and high quality products and processes.

FIGURE 6
 Model (A4) > Static Structural (A5) > Solution (A6) > Thermal Strain



INDUCTION HARDENED,
GROUND AND HONED BARS

ART
BEARINGS

Precision Bars



Anadolu rulman A.Ş. with experience more than 60 years is besides the production of bearing also producing the induction hardened, ground and honed bars.

PRODUCTS

- DIAMETER $\varnothing 6 \text{ mm} \div \varnothing 60 \text{ mm}$
- MATERIAL Ck45, Ck55, 100Cr6, 42CrMo4(4140)
- LENGHT Standart 6000 mm or according to customer request
- TOLERANCE ISO h6 or according to customer request
- ROUNDNESS IT/2
- STRAIGHTNESS 0.05 mm/m
- SURRFACE ROUGHNESS Max. 0.025 μm
- SURFACE HARDNESS 63 \div 65 HRC or according to customer request
- HARDNESS DEPTH 0.4mm \div 4mm



EN	DIN	STAS/SR	AFNOR	B.S.	UNI	JIS	GOST	ASTM/AISI
C45E	Ck45	OLC45X	XC 48	080M46	C45	S45C	45	1045
C55E	Ck55	OLC55X	XC 55H1	070M55	C55	S55C	55	1055
42CrMo4	42CrMo4	42MoCr11	42C4	708M40	42CrMo4	SCM440(H)	-	4140
100Cr6	100Cr6	Rul 1	100Cr6	535 4 H 99	100Cr6	SUJ 2	SH15	52100

artmil precision bars. standart production materials are CK35, CK45, CK55, 42CrMo4 (4140), 100Cr6 and production range is from Dia 6 mm to Dia 60 mm. Poduction is made according to TS EN 10083, TS 5823 and ISO 683.

BAR PRODUCTION FLOW DIAGRAM

THE TESTS PERFORMED AT OUR LABORATORIES

CHAMFERING

Angle Control

PEELING

Diameter Control

STRAIGHTENING

Straightness Control

SOFT GRINDING

Diameter and roughness Control

INDUCTION HARDENING

Hardness, hardness depth and crack control

HARD GRINDING

Diameter and roughness Control

POLISHING

Diameter and roughness Control

CUTTING AND PACKING

Visual Inspection

Macro structure control

Hardness test (HRC)

Surface Hardness Test

Dimensional Control

Straightness Control



Micro Cleanless Control

Micro Structure Control

Burn and Crack Control

Crack Control with magnetic particul

Fatigue Test

Roundness Control

Magnetism Control

Noise Level Control

Flatness, Parallelism and Runout

Radius Control



artmil precision bars standart production materials are CK35, CK45, CK55, 42CrMo4 (4140), 100Cr6 and production range is from Dia 6 mm to Dia 60 mm. Poduction is made according to TS EN 10083, TS 5823 and ISO 683.

Chemical Composition

Material	Code	C	Si	Mn	Pmax	Smax	Cr	Mo
Ck45	1.1191	0,42-0,5	Max0,4	0,5-0,8	0,035	0,035	Max0,3	-
Ck55	1.1203	0,52-0,6	Max0,4	0,6-0,9	0,035	0,035	Max0,3	-
100Cr6	1.7225	0,38-0,45	Max0,4	0,6-0,9	0,025	0,035	0,9-1,2	0,15-0,3
42CrMo4	1.3505	0,95-1,10	0,17-0,37	0,2-0,45	0,025	0,02	1,3-1,65	Max0,08





Kalitest
SERTİFİKA—CERTIFICATE OF REGISTRATION
 Bu sertifikayı aşağıdaki kuruluşta
 This certificate has been awarded to the company

art
 ANADOLU RULMAN İMALAT SANAYİ VE TİCARET ANONİM ŞİRKETİ
 Yaka Mahallesi 401. Sokak No:17 Cumhuriyet/DOĞUŞEHİR

Uygulanmakta olan çevre yönetim sisteminin
 To certify that the implemented environmental management system complies with
ISO 9001:2015
 Standartına uygunluğunu belgeledirmek amacıyla aşağıdaki kapsamda verilmiştir.
 For the activities described below

Üretim ve Makaralı Rulmanların Tasarımı, Üretimi, Satışı ve Servisi
 Design, Manufacturing, Sales and Service of Ball and Roller Bearing

EAC 18
 Kalitest Belgelendirme ve Eğitim Hizmetleri Ltd. Şti. :

6-09-4755
 11.03.2015
 9/17 pages
 11.03.2015
 11.03.2015
 11.03.2015

Kalitest
SERTİFİKA—CERTIFICATE OF REGISTRATION
 Bu sertifikayı aşağıdaki kuruluşta
 This certificate has been awarded to the company

art
 ANADOLU RULMAN İMALAT SANAYİ VE TİCARET ANONİM ŞİRKETİ
 Yaka Mahallesi 401. Sokak No:17 Cumhuriyet/DOĞUŞEHİR

Uygulanmakta olan çevre yönetim sisteminin
 To certify that the implemented environmental management system complies with
ISO 14001:2015
 Standartına uygunluğunu belgeledirmek amacıyla aşağıdaki kapsamda verilmiştir.
 For the activities described below

Üretim ve Makaralı Rulmanların Tasarımı, Üretimi, Satışı ve Servisi
 Design, Manufacturing, Sales and Service of Ball and Roller Bearing

EAC 18
 Kalitest Belgelendirme ve Eğitim Hizmetleri Ltd. Şti. :

6-09-4755
 11.03.2015
 9/17 pages
 11.03.2015
 11.03.2015

Kalitest
SERTİFİKA—CERTIFICATE OF REGISTRATION
 Bu sertifikayı aşağıdaki kuruluşta
 This certificate has been awarded to the company

art
 ANADOLU RULMAN İMALAT SANAYİ VE TİCARET ANONİM ŞİRKETİ
 Yaka Mahallesi 401. Sokak No:17 Cumhuriyet/DOĞUŞEHİR

Uygulanmakta olan sağlık ve güvenliği yönetim sisteminin
 To certify that the implemented occupational health and safety management system complies with
OHSAS 18001:2007
 Standartına uygunluğunu belgeledirmek amacıyla aşağıdaki kapsamda verilmiştir.
 For the activities described below

Üretim ve Makaralı Rulmanların Tasarımı, Üretimi, Satışı ve Servisi
 Design, Manufacturing, Sales and Service of Ball and Roller Bearing

EAC 18
 Kalitest Belgelendirme ve Eğitim Hizmetleri Ltd. Şti. :

6-09-4754
 07.07.2014
 9/17 pages
 11.03.2015
 07.07.2015



KalDer **EFQM**
 Committed to Excellence
1 star

Awarded to:
Anadolu Rulman İmalat San. ve Tic. A.Ş.

November 2015
 awarded for 1 year

Marc Amblard
 CEO, EFQM

EFQM
 Committed to Excellence
 1 star - 2015

TSC
TÜRK STANDARLARI ENSTİTÜSÜ
 TÜRKİSH STANDARDS INSTITUTION
 CERTIFICATE OF CONFORMITY TO TÜRKISH STANDARDS

TS EN 15270
 12.03.2015

TS EN 15270
 12.03.2015

TS EN 15270
 12.03.2015

TSC
TÜRK STANDARLARI ENSTİTÜSÜ
 TÜRKİSH STANDARDS INSTITUTION

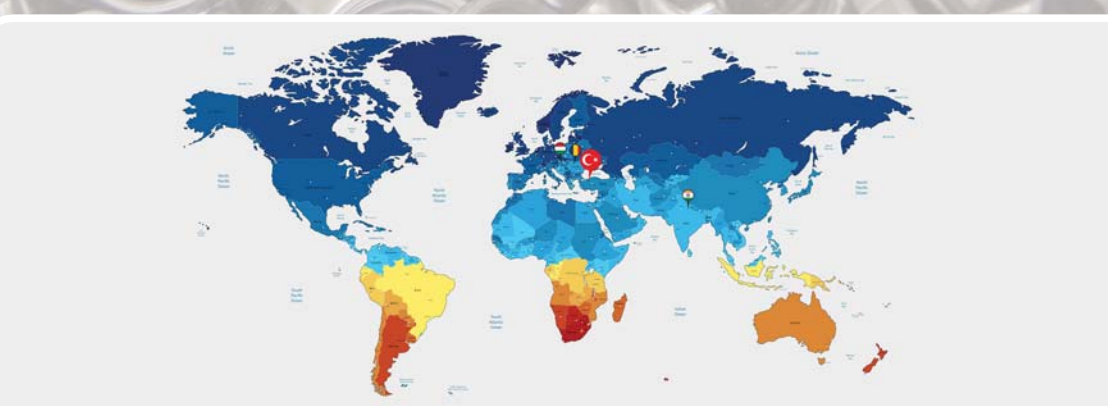
DENEY HİZMETİ ALINABİLECEK LABORATUVAR ONAYI
 TESTING LABORATORY APPROVAL

TÜRK STANDARLARI ENSTİTÜSÜ bu belge ile
ANADOLU RULMAN İMALAT SAN. VE TİC. A.Ş.

adresinde faaliyet gösteren
 ANADOLU RULMAN İMALAT SAN. VE TİC. A.Ş.

İstisnaysız olarak TSE Deney Hizmetleri Laboratuvar Kriterlerini ve diğer ilgili TSE Mevzuatına göre, kapsamında belirtilen deneyleri yapmaya yetelik bulunduğuna onaydır.
 This document is an approval of TSE Laboratories' activities and the other related TSE regulations, without any exception.

Numarası / Number: 120799-DB-0141
 Veriliş Tarihi / Issue Date: 12.03.2015
 Geçerlilik Tarihi / Valid Until: 12.03.2016



IRIS
CERTIFICATE
 H'52/018-0

ŞİRKETİ ART-Anadolu Rulman İmalat Sanayi ve Ticaret A.Ş.

IRIS
 International Railway Industry Standard (IRIS)
 Revision 02, June 2009

for the activities of Design and Development and Manufacturing for the status of certification of single safety components of rolling bearings and bearings components

Certificate valid from: 12/03/2015 Certificate valid until: 12/03/2016

Current date: 08/11/2016 Certificate Register No: BUC618179

UTAC
CERTIFICATE
 H'52/018-0

ŞİRKETİ ART-Anadolu Rulman İmalat Sanayi ve Ticaret A.Ş.

UTAC
 Registration Number: BUC618179
 Yaka Mahallesi 401. Sokak No:17 Cumhuriyet/DOĞUŞEHİR TÜRKİYE

Üretim ve Makaralı Rulmanların Tasarımı, Üretimi, Satışı ve Servisi

CERTIFICATION VALIDITY: from 08-January-2015 to 04-January-2021

UTAC
CERTIFICATE
 H'52/018-0

ŞİRKETİ ART-Anadolu Rulman İmalat Sanayi ve Ticaret A.Ş.

UTAC
 Registration Number: BUC618179
 Yaka Mahallesi 401. Sokak No:17 Cumhuriyet/DOĞUŞEHİR TÜRKİYE

Üretim ve Makaralı Rulmanların Tasarımı, Üretimi, Satışı ve Servisi

CERTIFICATION VALIDITY: from 08-January-2015 to 04-January-2021

RAILWAY

OIL INDUSTRY

ENERGY



Factory

Anadolu Rulman İmalat Sanayi ve Ticaret A.Ş.

Adress : Yaka Mahallesi 401.Sokak No:17 81700 Cumayeri / DÜZCE – TÜRKİYE

Phone : +90 380 735 51 54

Fax : +90 380 735 51 77

e-mail : info@anadolurulman.com.tr

Web : www.anadolurulman.com.tr

ART
BEARINGS